

ENDURANCE

CLUBCLASS · CORPORATE CLOTHING



Simply made to **perform at work**

Too many corporate clothing providers believe merely adding the word 'performance' to their label makes for a viable performance tailored clothing solution. At Clubclass we only make promises we can stand by; no smoke and mirrors just high quality corporate tailoring, simple.

We started with the fabric; we wanted something that was both more durable than current tailoring yet also comfortable. We found it in a fabric made from high quality wool mixed with low-pill, high tech, Polyester. We asked a brilliant garment technician to produce jacket patterns for men & women concentrating on fit and ease of movement and to produce trousers that fit but are great to work in. We then used a higher grade of trim (Lining, Buttons, Internal canvas, chest piece and shoulder pads) than would normally be used in clothing at this price. We even made sure we put the internal pockets onto fabric inserts rather than directly onto the lining, because it is better and stronger and we believe it is attention to detail that sets the best apart.

Fabric: **70% Polyester / 30% Wool**

(Wool has natural elasticity for shape retention. Polyester is durable)

Weight: **360grms**

(Heavy Duty & Machine washable)

Machine Washable: **40°**

(convenient and cost effective)

Durable: **80,000+** martindale test

(will stand up to hard wear hour after hour)

Proven: **1000's of sales** with no complaints

(Peace of mind that you are buying proven garments)

Simply Quality Tailoring stripped down to its most minimal form and rebuilt for function in a modern work place. Hardwearing, comfortable, tough and honest: "The endurance Tailoring Collection".



Men's **Dockland** Jacket

pg 4/5/6

2 button jacket available in size 36" to 54"



Men's **Ritz** Waistcoat

pg 7

Available in size 36" to 50"



Men's **Principle** Trouser

pg 7

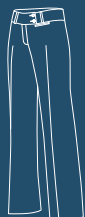
Available in size 28" to 50" in S, R, L and 37" leg length



Women's **Bankside** Jacket

pg 8/9

3 Button jacket available in size 6 to 24



Women's **Brompton** Trouser

pg 10

Fashion trouser with wide waistband available in sizes 6 to 24
Size 11 & 13 available in this trouser



Women's **Chelsea** Trouser

pg 10

Available in size 6 to 24
Size 11 & 13 available in this trouser



Women's **Astoria** Skirt

pg 11

Available in size 6 to 24



Women's **Adelphi** Vest

pg 11

Available in size 6 to 24

All above available in Navy, Charcoal and Black in a complete mix and match collection.

The endurance collection is available from the best corporate clothing suppliers in Europe; please ask them for their valuable advice when selecting suitable clothing for the workplace.



Dockland Jacket
Single Breasted Jacket,
2 Button Fastening, Side Vents,
Feature Lining.
Machine Washable

Codes & Colours:

E4J0459 Navy
E4J0489 Charcoal
E4J0499 Black

Sizes:

36" - 54" Regular
38" - 50" Short
36" - 50" Long

EU Sizes:

46 - 64 Regular
48 - 60 Short
46 - 60 Long

Quality Tailoring / Fit / Washable /
Hardwearing / Honest / Simple

We have not used Lycra and we make no attempt at being "authentic" We simply wanted to make the best endurance tailoring we could with the technology of today at a truly outstanding price. "The endurance collection" is better than any stock garment currently available at this price.

Weight: **360grms**

(Heavy Duty & Machine washable)

Machine Washable: **40°**

(convenient and cost effective)

Durable: **80,000+** martindale test

(will stand up to hard wear hour after hour)

Proven: **1000's of sales** with no complaints

(Peace of mind that you are buying proven garments)

Fabric: **70% Polyester / 30% Wool**

(Wool has natural elasticity for shape retention. Polyester is durable)

Machine or
hand washable

Two tone lining

Traditional
sleeve lining

Secure
breast
pocket

4 inside pockets



Weight: **360grms**

(Heavy Duty & Machine washable)

Machine Washable: **40°**

(Convenient and cost effective)

Durable: **80,000+** martindale test

(Will stand up to hard wear hour after hour)

Proven: **1000's** of sales with no complaints

(Peace of mind that you are buying proven garments)

Fabric: **70% Polyester / 30% Wool**

(Wool has natural elasticity for shape retention.

Polyester is durable)

Dockland Jacket

Single Breasted Jacket,
2 Button Fastening, Side Vents,
Feature Lining.

Machine Washable

Codes & Colours:

E4J0459 Navy
E4J0489 Charcoal
E4J0499 Black

Sizes:

36" - 54" Regular
38" - 50" Short
36" - 50" Long

EU Sizes:

46 - 64 Regular
48 - 60 Short
46 - 60 Long



WE HAVE
WORKED SMARTER
SO YOU CAN
WORK HARDER

Ritz Waistcoat

5 Button Fastening, Fabric Back,
Feature Lining,
Machine Washable

Codes & Colours:

E5W0459 Navy
E5W0489 Charcoal
E5W0499 Black

Sizes:

36" - 50" Regular

EU Sizes:

46 - 60 Regular



Principle Trouser

Single Pleat, French Bearer, Hip Pocket,
1/2 Lined.

Machine Washable

Codes & Colours:

E4T0459 Navy
E4T0489 Charcoal
E4T0499 Black

Sizes:

28" - 50"	Regular	31" inside leg
28" - 50"	Short	29" inside leg
28" - 50"	Long	33" inside leg
28" - 50"	Unfinished	37" inside leg

EU Sizes:

44 - 66	Regular
44 - 66	Short
44 - 66	Long
44 - 66	Unfinished

Are you a Professional meeting customers or working behind the scenes? Do you work hard in a quality hotel or discreet security? Drive miles for a living or face the public in a retail environment? Work long hours in a restaurant or bar and want to look smart from the start of your shift till the end? This washable, high performance collection will be ideal. Endurance tailored clothing is for anyone and everyone that works hard for a living and want their clothing to do the same.

Weight: **360grms**

(Heavy Duty & Machine washable)

Machine Washable: **40°**

(Convenient and cost effective)

Durable: **80,000+** martindale test

(Will stand up to hard wear hour after hour)

Proven: **1000's of sales** with no complaints

(Peace of mind that you are buying proven garments)

Fabric: **70% Polyester / 30% Wool**

(Wool has natural elasticity for shape retention. Polyester is durable)



Quality Tailoring / Fit / Washable / **Hardwearing** / Honest / Simple

Quality Tailoring /
Fit / Washable /
Hardwearing /
Honest / Simple

Bankside Jacket

Single Breasted Jacket,
3 Button Fastening,
Feature Lining,
Machine Washable

Codes & Colours:

E5J1559 Navy
E5J1589 Charcoal
E5J1599 Black

Sizes:

6 - 24 Regular
6 - 16 Petite
8 - 24 Long

EU Sizes:

34 - 52 Regular
34 - 44 Petite
36 - 52 Long



Weight: **360grms**

(Heavy Duty & Machine washable)

Machine Washable: **40°**

(Convenient and cost effective)

Durable: **80,000+** martindale test

(Will stand up to hard wear hour after hour)

Proven: **1000's of sales** with no complaints

(Peace of mind that you are buying proven garments)

Fabric: **70% Polyester / 30% Wool**

(Wool has natural elasticity for shape retention. Polyester is durable)

Chelsea Trousers

Front Fastening, Flared Leg, Belt Loops, Cash Pocket & Feature Lining Waistband.
Machine Washable

Codes & Colours:

E4LT459 Navy
E4LT489 Charcoal
E4LT499 Black

Sizes:

6 - 24 Regular 31" inside leg
6 - 24 Petite 29" inside leg
6 - 24 Long 34" inside leg
6 - 24 Unfinished 37" inside leg

EU Sizes:

34 - 52 Regular
34 - 52 Petite
34 - 52 Long
34 - 52 Unfinished

All ladies trousers available in size 11" & 13"



Brompton Trousers

Front Fastening, Flared Leg, Belt Loops, Cash Pocket, 2 Feature Hip Pockets, Low Waist, Deep Waistband with Feature Lining.
Machine Washable

Codes & Colours:

E5LT459 Navy
E5LT489 Charcoal
E5LT499 Black

Sizes:

6 - 24 Regular 31" inside leg
6 - 24 Petite 29" inside leg
6 - 24 Long 34" inside leg
6 - 24 Unfinished 37" inside leg

EU Sizes:

34 - 52 Regular
34 - 52 Petite
34 - 52 Long
34 - 52 Unfinished

Adelphi Vest

4 Button Fastening,
Fabric Back,
Feature Lining.
Machine Washable

Codes & Colours:

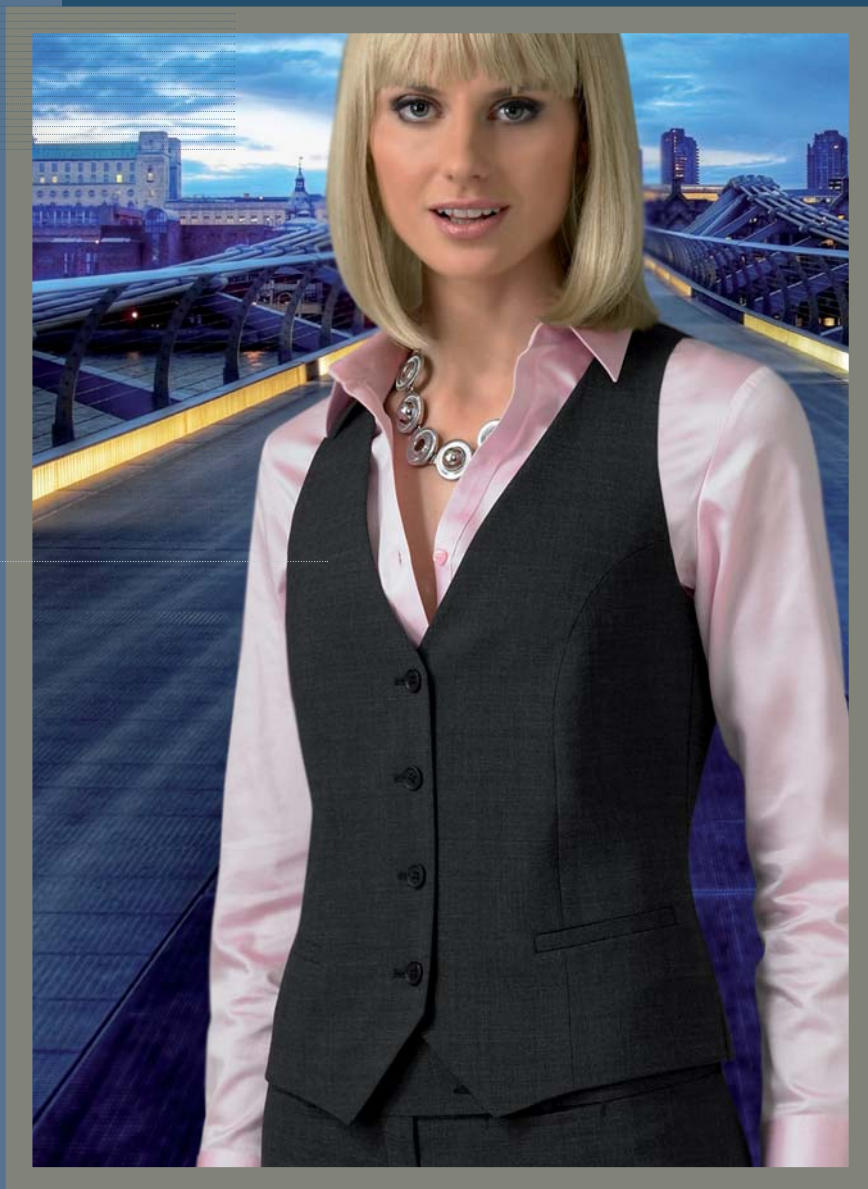
E5V0459 Navy
E5V0489 Charcoal
E5V0499 Black

Sizes:

6 - 24 Regular

EU Sizes:

34 - 52 Regular



Astoria Skirt

Pencil Skirt with Feature Bungee Cord
in Left Side Seam.
Machine Washable

Codes & Colours:

E5S1259 Navy
E5S1289 Charcoal
E5S1299 Black

Sizes:

6 - 24 Regular 23" Length
6 - 24 Long 25" Length

EU Sizes:

34 - 52 Regular
34 - 52 Long



Who are Clubclass?

Clubclass is part of the Stuncroft group and manufacture tailored clothing for many of the high streets biggest clothing brands. We have a 25 year track record in supplying Corporate Tailoring both from stock and for specific contracts. We have been tailoring clothing for over 30 years and make more tailored garments than any other supplier of Corporate clothing in the UK. We are the only stock supported supplier of tailored clothing that owns a factory and have full time garment technicians, people with real experience, living and working where we produce the clothing you see in this brochure. We use dedicated garment technicians for both men's and ladies tailoring; We also tailor over 6000 made to measure suits per year; all individually made by our own in house tailors.

CLUBCLASS  *Tailoring*

